



Goldenrod
Solidago sp.



Pine Lily
Lilium catesbaei



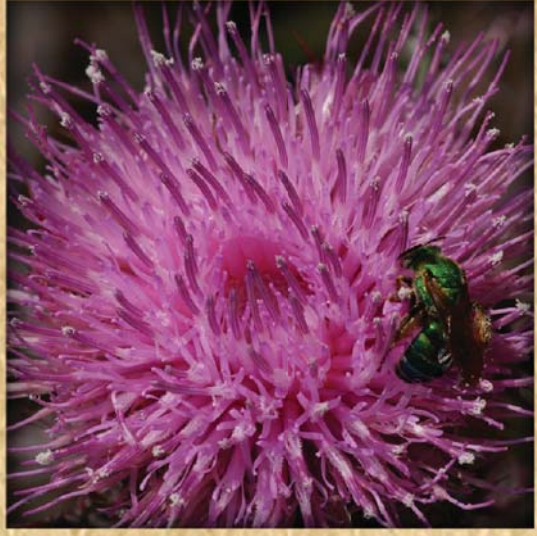
Swamp Milkweed
Asclepias perennis



Rosy Camphorweed
Pluchea baccharis



Sky-Blue Lupine
Lupinus diffusus



Purple Thistle
Cirsium horridulum



Pine Hyacinth
Clematis baldwinii



Southeastern Sneezeweed
Helenium pinnatifidum



Scarlet Rosemallow
Hibiscus coccineus



Skyflower
Hydrolea corymbosa



Virginia Saltmarsh Mallow
Kosteletzkya pentacarpos



Gopher Apple
Licania michauxii



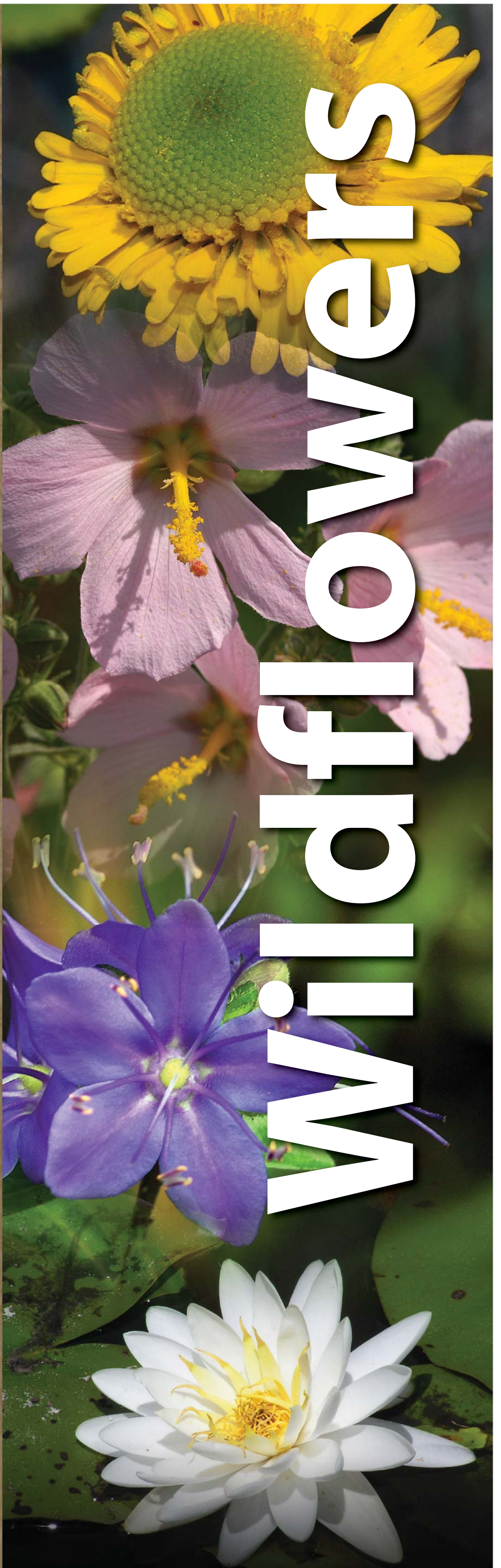
Florida Air Plant
Tillandsia simulata



American White Waterlily
Nymphaea odorata

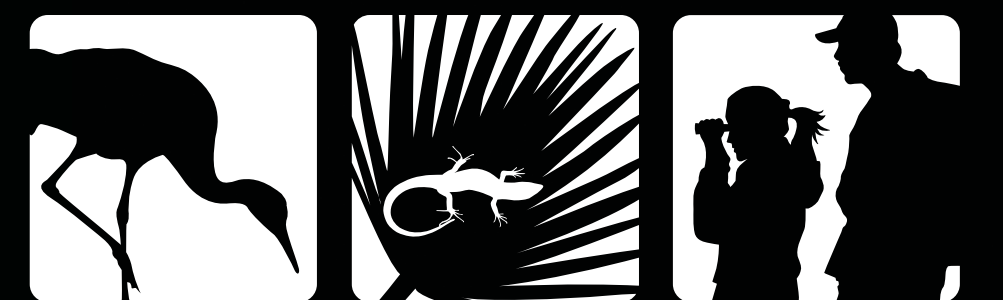


Purple Passionflower
Passiflora incarnata



Wildflowers

Southwest Florida
Water Management District



CONSERVATION LANDS

Through its efforts to protect water resources, the Southwest Florida Water Management District buys and manages land. As a result, plants and animals that live on these lands are also protected and the public can enjoy recreational and educational activities in the great outdoors. For a more comprehensive list containing birds, mammals, butterflies, frogs, toads, insects, trees, shrubs, reptiles, wildflowers and natural communities, please visit

WaterMatters.org/species