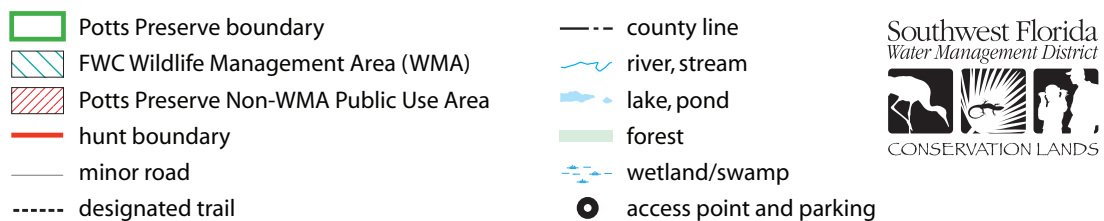
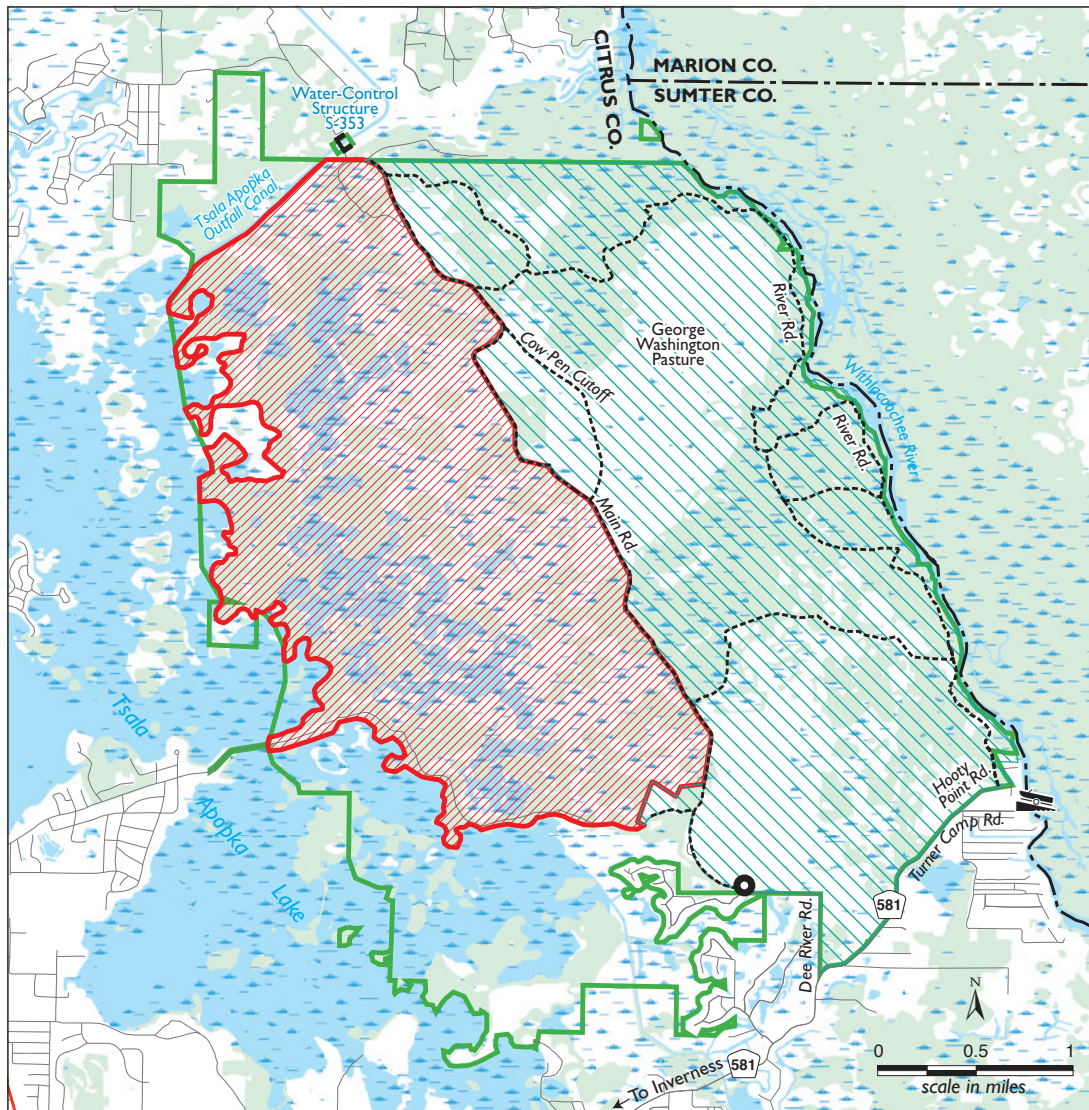


# Potts Preserve Non-Wildlife Management Area (WMA) Hunt Area Notice

The Potts Preserve non-WMA public use area will no longer require a Southwest Florida Water Management District hunting permit.

1. Non-WMA public use area hunting open year-round in accordance with applicable state regulations and state zonal seasons, with the following exceptions (per Southwest Florida Water Management District rule):
  - a. No dogs
  - b. No night use
  - c. No trapping
2. Open for year-round public access. Please refer to the Potts Preserve webpage for available recreation information ([www.WaterMatters/Potts](http://www.WaterMatters/Potts)).
3. Contact FWC ([www.MyFWC.com](http://www.MyFWC.com)) for information regarding license requirements and permits.



For more information, visit [WaterMatters.org/hunting](http://WaterMatters.org/hunting)